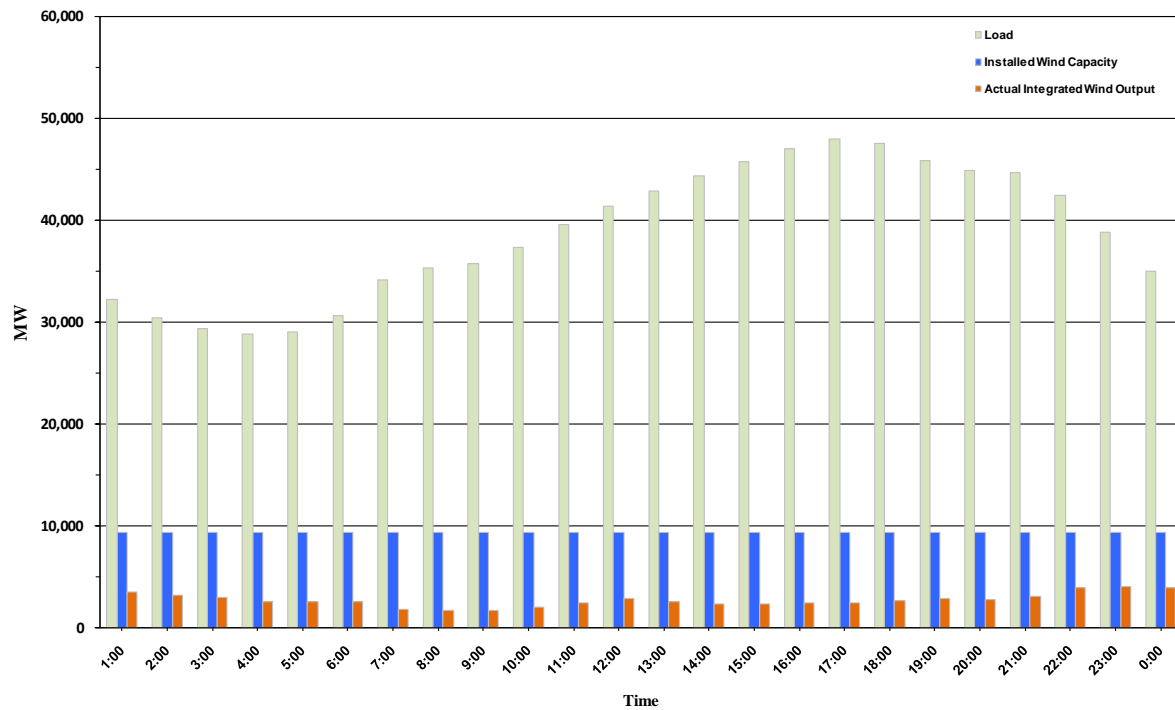




ERCOT Grid Operations Wind Penetration Report: 09/21/10

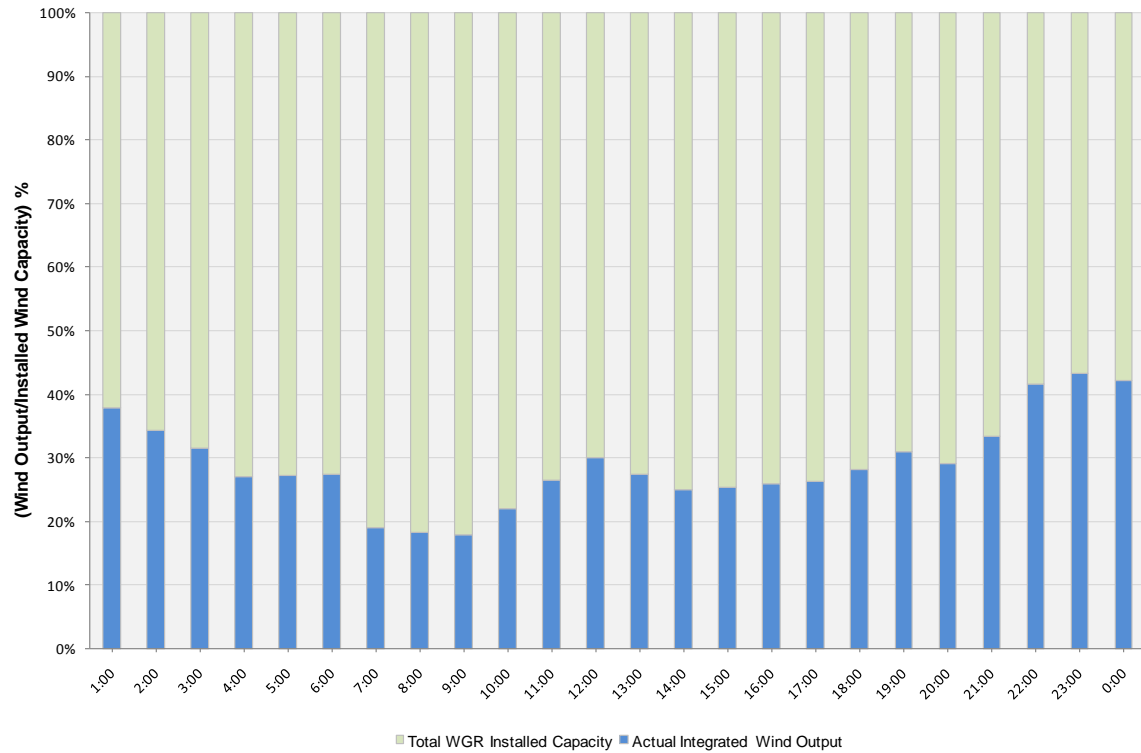
Peak Load	47,994 MW
Load Peak Hour	17
Wind Record 06/12/10	7016 MW
Max Wind value	4132 MW
Wind Peak Hour	22:10:52
Wind Penetration %	10.31

Hourly Average Actual Load vs. Actual Wind Output
09-21-2010

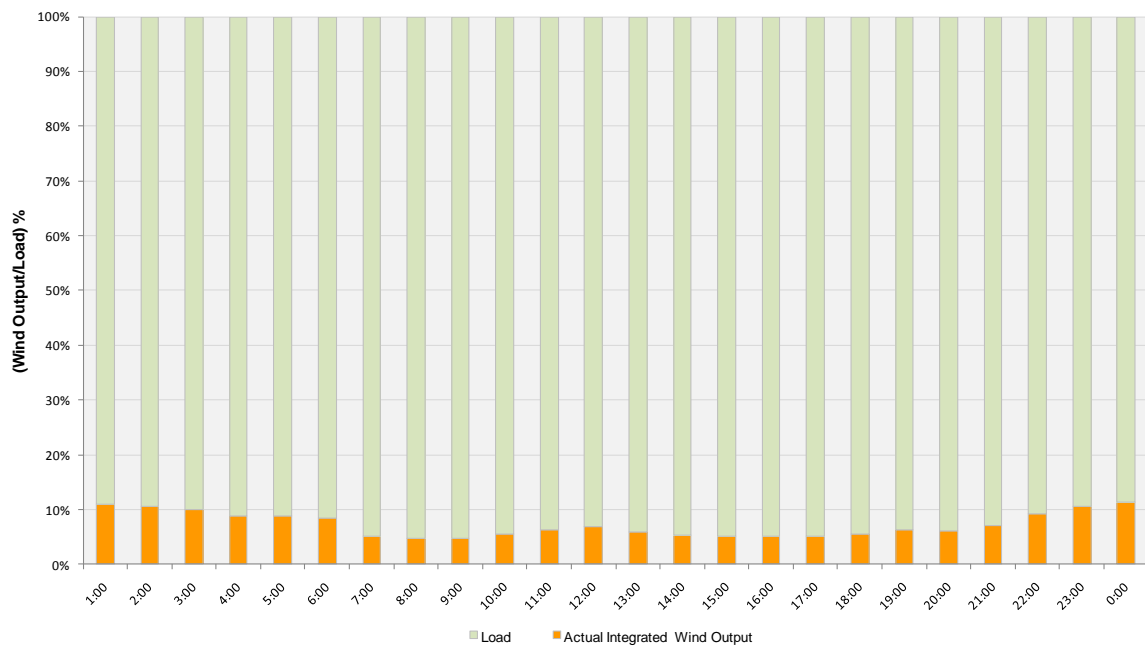




Actual Wind Output as a Percentage of the Total Installed Wind Capacity
09-21-2010



Actual Wind Output as a Percentage of the ERCOT Load
09-21-2010





ERCOT Load vs. Actual Wind Output 09/14/10 - 09/21/10

